




---

Door safety switches

---

Top Mounted Controls and Electrical Control Gear, away from water splash, easy access for Servicing

---

Machine operation inter-locked to Rinse Temperature

---

Fully panelled front and sides (avoiding water splash to motors etc. when dish wash area is being cleaned)

---

Capacity up to 150 racks per hour

---

Clutch controlled conveyor (providing protection to drive mechanism if racks jam in machine)

---

Low water protection (to wash tank elements)

---

Integral rinse booster heater 12kW

---

Wash and rinse elements fitted with individual thermostats

---

Rinse economiser (pre-set to provide precise volume of rinse water irrespective of fluctuation in water supply pressure)

---

Maximum Water Consumption 450 Litres per hour

---



---

#### **OTHER OPTIONS**

---

Extension Hoods and Vent Spigots at entry and exit ends

---

Angle Feed Unit

---

90° Entry and/or Exit Curves (powered by dishwasher)

---

180° Entry Curve (powered by dishwasher)

---

180° Entry and/or Exit Curves (self-powered)

---

6kW or 9kW High Velocity Blower Dryer

---

Heat and Sound Insulating Panels

---

Rinse Pressure Booster Pump

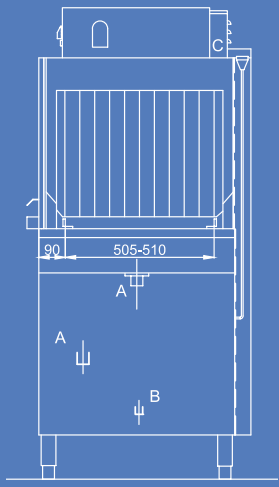
---

Exit Bench (proximity) Trip Switch pre-wired into control box. This provides automatic shut down whenever exit bench becomes full

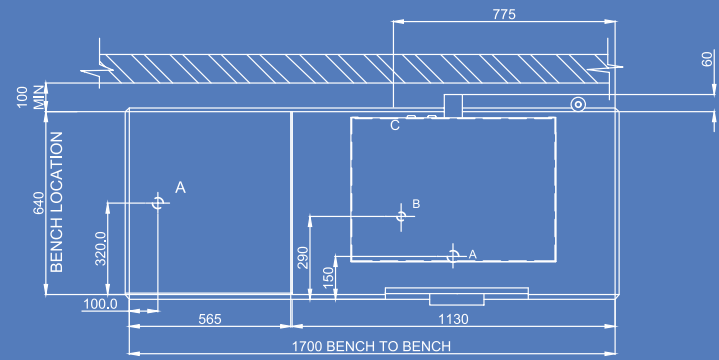
---

- A. Drain Connection 2 x 2" BSP
- B. Hot Water Connection 1/2" BSP, 450L/hr, 2-4 bar, 60°C-65°C min.
- C. Electrical Connection 415/50/3N Electric Total 24.2kW

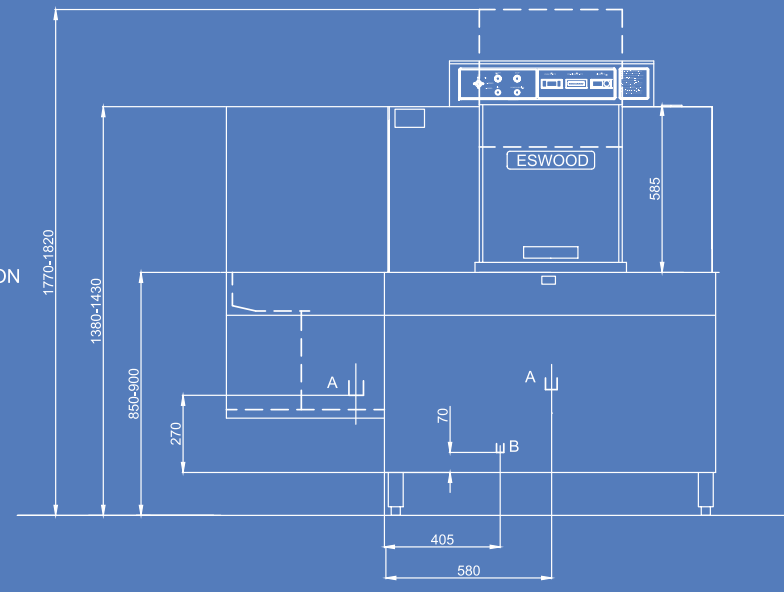
03



DIRECTION →



DIRECTION →



# ES150

## Rack-Conveyor Warewasher

### ES150 Specifications

<b>DIMENSIONS (WxDxH)</b>	1700 x 730 x 1600 mm
<b>RACK SIZE (WxD)</b>	500 x 500 mm
<b>ELECTRICAL CONNECTION</b>	415V/50Hz/3N
<b>RATING</b>	24.2 kW
<b>CAPACITY</b>	100 to 150 racks per hour
<b>WATER SUPPLY</b>	2-4 bar, 60°C-65°C min.
<b>WATER CONSUMPTION</b>	450 L per hour

Dimensions may change without notice in accordance with product development and design

<b>TANK CAPACITY</b>	87 L
<b>CONVEYOR DRIVE</b>	180 watts (with safety clutch)
<b>PUMP MOTOR CAPACITY</b>	2.2 kW
<b>WATER HEATER</b>	9.0 kW
<b>WASH TEMPERATURE</b>	60 – 65°C
<b>RINSE BOOST CYLINDER CAPACITY</b>	14 L
<b>RINSE BOOST CYLINDER HEATER</b>	12.0 kW
<b>RINSE TEMPERATURE</b>	82°C minimum
<b>WEIGHT</b>	250 kg
<b>PACKED</b>	2.9 m <sup>3</sup>
<b>WATERMARK APPROVAL</b>	WM-022833
<b>HACCP APPROVAL</b>	PE-388-GE-09



[eswood.com.au](http://eswood.com.au)

211-217 Woodpark Road SMITHFIELD NSW 2164

T: 1800 013 123

E: [sales@middleby.com.au](mailto:sales@middleby.com.au)

Proudly Distributed By

