

Food Equipment (NZ) Ltd

1066 Hinemoa Street, Rotorua

P.O. Box 10067, Rotorua, New Zealand

(07) 3488430



Upright Refrigerator Cabinet

Model NO.: GN-600BT



Food Equipment (NZ) Ltd

1066 Hinemoa Street, Rotorua

P.O. Box 10067, Rotorua, New Zealand

(07) 3488430



Specification

| | |
|----------------------------|------------------------|
| Dimensions | 660 x 780 x 2010 mm |
| Net Volume | 600 Liter |
| Temperature Range (°C) | 2 to 8 |
| Ambient | T |
| Doors | 1 solid / auto-closing |
| Shelf | 3 ,GN1/2 |
| Voltage / Frequency (V/Hz) | 220 – 240 / 50 |
| Input Power (W) | 500 |
| Compressor (HP) /Gas | Embraco /R134a |
| Type of Cooling | fan assisted |
| Type of Defrost | automatic |
| Controller | digital |
| Body Constuction | Stainless Steel |
| Condenser | Pure Cooper |
| Wheel | Castor |

** All Guzzini products must pass numerous quality control inspections throughout the manufacturing process.*

** All Guzzini products are operated and monitored for a minimum of thirteen hours prior to packaging and shipping.*

** All Guzzini Products are CE& IEC approved .*

** All Guzzini products come with full one year parts warranty*

Food Equipment (NZ) Ltd

1066 Hinemoa Street, Rotorua

P.O. Box 10067, Rotorua, New Zealand

(07) 3488430



Features

- * *Digital controller system ,automatic air defrosting sysen and on-off switch*
- * *Designed for effective operation in high ambient 43°C environments, and built to withstand the rigours of day-to-day operation*
- * ⌚ *Self-closing doors fitted with easy to clean, replaceable magnetic balloon gaskets*
- * ⌚ *Delivered to site with heavy duty, non-marking swivel castors with brakes for superior mobility and designed to fit through a standard door for ease of positioning*
- * ⌚ *The ventilation refrigeration system positioned outside the refrigerating chamber allows an even air distribution insdie the cabinet and gives extra storage space.*
- * ⌚ *Adjustable interal shelves size in GN1/2 size*

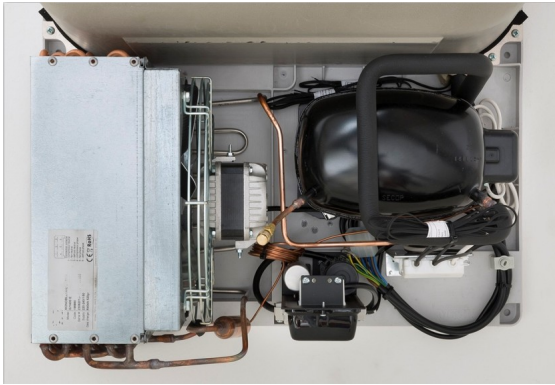


Food Equipment (NZ) Ltd

1066 Hinemoa Street, Rotorua

P.O. Box 10067, Rotorua, New Zealand

(07) 3488430



Technical Drawing & Packaging

www.foodequipment.co.nz

Food Equipment (NZ) Ltd

1066 Hinemoa Street, Rotorua

P.O. Box 10067, Rotorua, New Zealand

(07) 3488430

