

## Food Equipment (NZ) Ltd

1066 Hinemoa Street, Rotorua

P.O. Box 10067, Rotorua, New Zealand

(07) 3488430



## *Upright Refrigerator Cabinet*

Model NO.: GN-650BT



# Food Equipment (NZ) Ltd

1066 Hinemoa Street, Rotorua

P.O. Box 10067, Rotorua, New Zealand

(07) 3488430



## Specification

<b>Dimensions</b>	<b>740 x 780 x 2010 mm</b>
<b>Net Volume</b>	<b>650 Liter</b>
<b>Temperature Range (°C)</b>	<b>-12 to -18</b>
<b>Ambient</b>	<b>T</b>
<b>Doors</b>	<b>1 solid / auto-closing</b>
<b>Shelf</b>	<b>3 ,GN1/2</b>
<b>Voltage / Frequency (V/Hz)</b>	<b>220 – 240 / 50</b>
<b>Input Power (W)</b>	<b>500</b>
<b>Compressor (HP) /Gas</b>	<b>Embraco /R134a</b>
<b>Type of Cooling</b>	<b>fan assisted</b>
<b>Type of Defrost</b>	<b>automatic</b>
<b>Controller</b>	<b>digital</b>
<b>Body Constuction</b>	<b>Stainless Steel</b>
<b>Condenser</b>	<b>Pure Cooper</b>
<b>Wheel</b>	<b>Castor</b>

*\* All Guzzini products must pass numerous quality control inspections throughout the manufacturing process.*

*\* All Guzzini products are operated and monitored for a minimum of thirteen hours prior to packaging and shipping.*

*\* All Guzzini Products are CE& IEC approved .*

*\* All Guzzini products come with full one year parts warranty*

# Food Equipment (NZ) Ltd

1066 Hinemoa Street, Rotorua

P.O. Box 10067, Rotorua, New Zealand

(07) 3488430



## Features

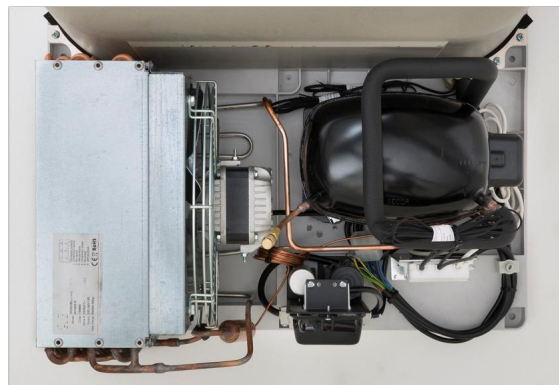
- \* *Digital controller system ,automatic air defrosting sysen and on-off switch*
- \* *Designed for effective operation in high ambient 43 ° C environments, and built to withstand the rigours of day-to-day operation*
- \* *Self-closing doors fitted with easy to clean, replaceable magnetic balloon gaskets*
- \* *Delivered to site with heavy duty, non-marking swivel castors with brakes for superior mobility and designed to fit through a standard door for ease of positioning*
- \* *The ventilation refrigeration system positioned outside the refrigerating chamber allows an even air distribution insdie the cabinet and gives extra storage space.*
- \* *Adjustable interal shelves size in GN1/2 size*

# Food Equipment (NZ) Ltd

1066 Hinemoa Street, Rotorua

P.O. Box 10067, Rotorua, New Zealand

(07) 3488430



# Food Equipment (NZ) Ltd

1066 Hinemoa Street, Rotorua

P.O. Box 10067, Rotorua, New Zealand

(07) 3488430



## Technical Drawing & Packaging

