

Food Equipment (NZ) Ltd

1066 Hinemoa Street, Rotorua

P.O. Box 10067, Rotorua, New Zealand

(07) 3488430



Upright Refrigerator Cabinet

Model NO.: GN1410 BT



Specification

www.foodequipment.co.nz

Food Equipment (NZ) Ltd

1066 Hinemoa Street, Rotorua

P.O. Box 10067, Rotorua, New Zealand

(07) 3488430



Dimensions	1480 x 830 x 2010 mm
Net Volume	1400 Liter
Temperature Range (°C)	-12 to -18
Ambient	T
Doors	2 solid / auto-closing
Shelf	6 ,GN1/2
Voltage / Frequency (V/Hz)	220 – 240 / 50
Input Power (W)	850
Compressor (HP) /Gas	Embraco /R134a
Type of Cooling	fan assisted
Type of Defrost	automatic
Controller	digital
Body Constuction	Stainless Steel
Condenser	Pure Cooper
Wheel	Castor

** All Guzzini products must pass numerous quality control inspections throughout the manufacturing process.*

** All Guzzini products are operated and monitored for a minimum of thirteen hours prior to packaging and shipping.*

** All Guzzini Products are CE& IEC approved .*

** All Guzzini products come with full one year parts warranty*

Features

** Digital controller system ,automatic air defrosting sysen and on-off switch*

Food Equipment (NZ) Ltd

1066 Hinemoa Street, Rotorua

P.O. Box 10067, Rotorua, New Zealand

(07) 3488430



** Designed for effective operation in high ambient 43°C environments, and built to withstand the rigors of day-to-day operation*

** •Self-closing doors fitted with easy to clean, replaceable magnetic balloon gaskets*

** •Delivered to site with heavy duty, non-marking swivel castors with brakes for superior mobility and designed to fit through a standard door for ease of positioning*

** •The ventilation refrigeration system positioned outside the refrigerating chamber allows an even air distribution inside the cabinet and gives extra storage space.*

** •Adjustable internal shelves size in GN1/2 size*

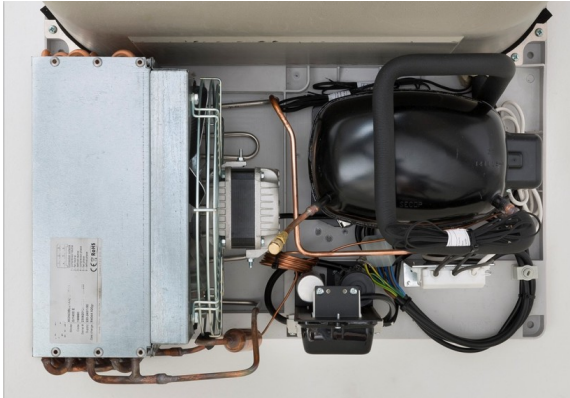


Food Equipment (NZ) Ltd

1066 Hinemoa Street, Rotorua

P.O. Box 10067, Rotorua, New Zealand

(07) 3488430



Technical Drawing & Packaging

Food Equipment (NZ) Ltd

1066 Hinemoa Street, Rotorua

P.O. Box 10067, Rotorua, New Zealand

(07) 3488430

